

SPECIFICATIONS

Type	Single Sided	
Where to fix	Wall Mounted Frame Mounted (Crane)	
LED Source	LED Modules SA 2398 Equivalent from SA-LED Australia	
Power Source	Suitable Power Supply from SA-LED Australia	
Dimension	Length	Any Size
	Height	Up to 2,000mm
	Deep	168mm
Face	Flexface Kedar Finish	
Return	Aluminum Extrusion Bar SA LM165 from SA-LED Australia - Mill(2B) Finish - 2Pac Spray (Other colours) - Power Coating	
Back	ACM or Equivalent Material	
Cover Size	88mm Half Cover x 5mm Trim SA SC88 from SA-LED Australia	

- Price do not include acrylic sheets.
- Price do not include packaging and delivery
- Artwork has to be provided by the client.
- Please make sure to include the original artwork files that is:
 - ✓ 1:1 Scale
 - ✓ 100% Vector(*.eps)
 - ✓ PDF File format (*.pdf)
 - ✓ CorelDRAW (*.cdr, *.dxf)

3D STRUCTURE

Front View

LEDs

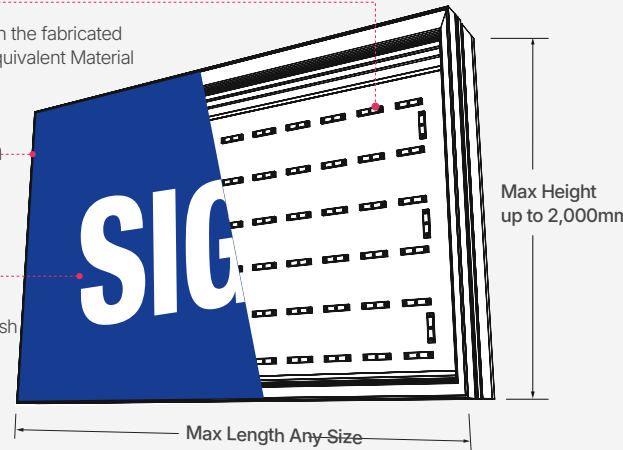
Installed on the fabricated ACM or Equivalent Material

Return

Aluminum

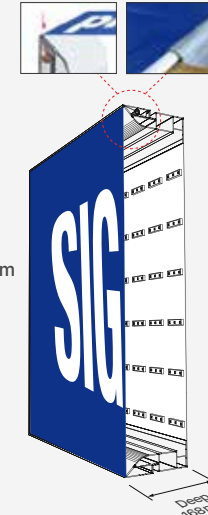
Face

Flexface Kedar Finish

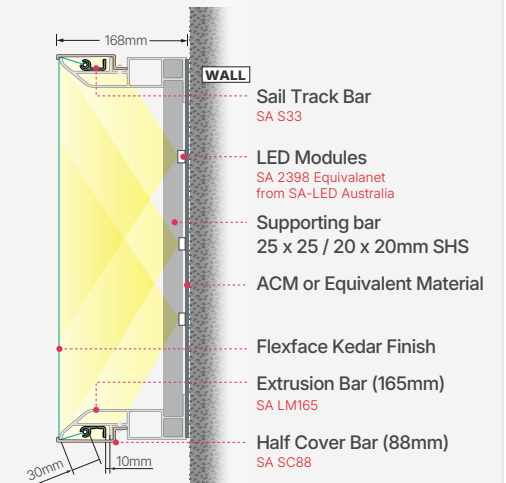


Side View

*Sail Track with Kedar edging

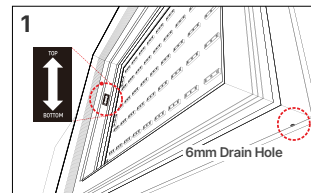


Side View : Wall Mounted

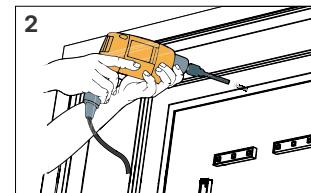


*All LED modules, power suppliers, extrusion bars, angle trims and other bars can be purchased in www.SA-LED.com

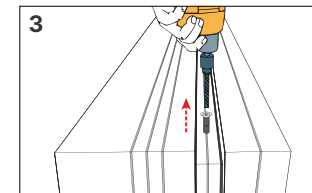
INSTALLATION GUIDE



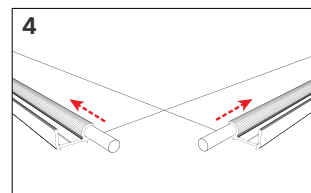
TOP & BOTTOM indicative sticker on the side, predrilled 6mm drain hole on the bottom.



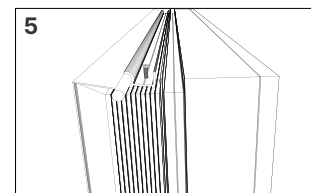
20x2mm perimeter fixing area for easy installation.



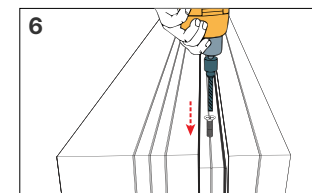
Remove screw from cover bar.



Put the rope edge into sail track bar.



Tension in the order of top, left, right and bottom.



Put the cover bar back on, fix it with screw.

PROJECTS

